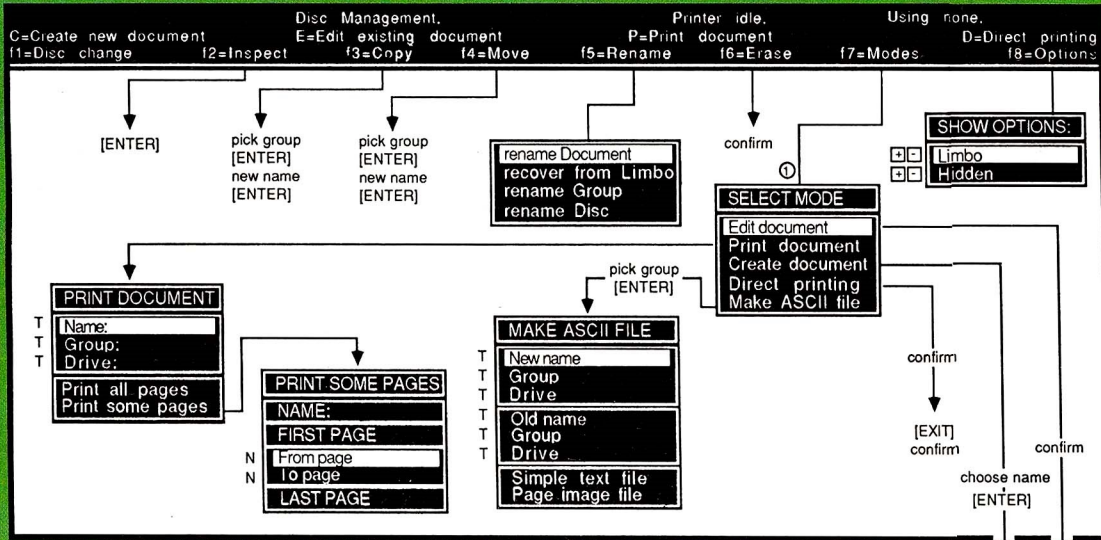




# LOCOSCRIPT

## THE GUIDE AT YOUR SIDE

### DISC MANAGEMENT SCREEN

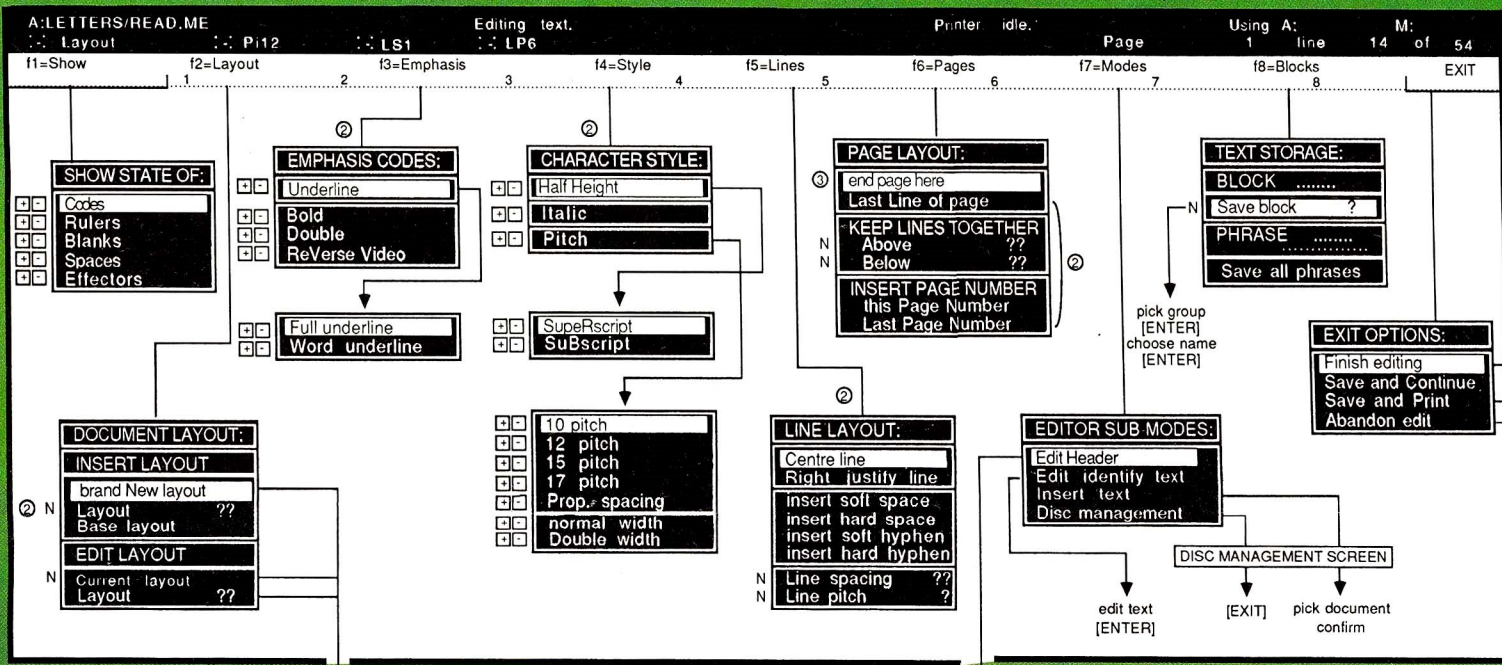


### How to use this chart

This chart shows all the possible screens and menus that you can see in LocoScript, how to get to each one and where it goes afterwards. To make it easier to read, we've used certain conventions:

- ▶ Where there's no other legend, the normal way of using a menu is to place the highlight bar over the item you want using the cursor up and down keys, and then press [ENTER] which both actions the choice and clears the menu off.
- ▶ Menu choices in capitals are headings and cannot be selected – the highlight bar will just skip over them.
- ▶ If the menu choice has  by it, then you must press  to set or  to clear the choice before pressing [ENTER] to complete.
- ▶ If the menu choice has N or T by it, then you must type a Number or some Text respectively followed by [ENTER], before pressing [ENTER] again to complete.
- ▶ Some of the simple menus that merely ask you to confirm an action have been left off – the chart just says "confirm" at these points. Press [ENTER] to proceed or [CAN] to stop.
- ▶ Where further explanation is needed, we've used a footnote.

### EDITING TEXT SCREEN



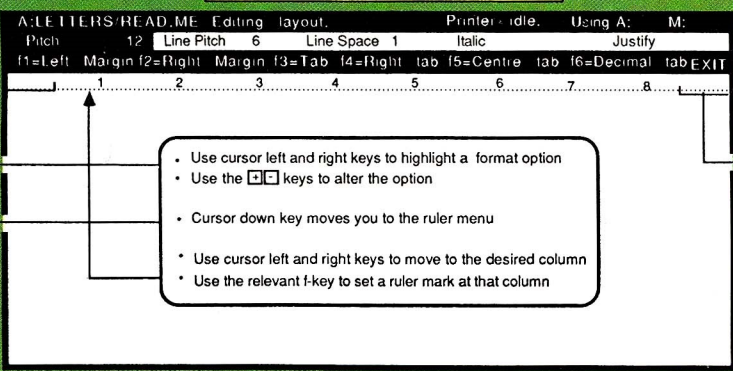
### SET MENU

- Bold
- Centre
- Double
- Italic
- Keep
- Layout
- Line Pitch
- Line Spacing
- Last Line
- Last Page Number
- Pitch
- Page Number
- ReVerse
- Right Justify
- SuBscript
- SupeRscript
- UnderLine
- Word underline
- Unit
- hard space
- hard hyphen

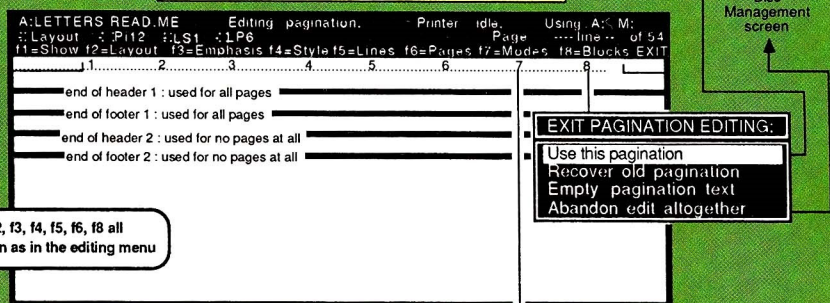
### CLEAR MENU

- Bold
- Double
- Italic
- Keep
- Layout
- Line Pitch
- Line Spacing
- Pitch
- ReVerse
- SuBscript
- SupeRscript
- UnderLine
- ( ) soft space
- ( ) soft hyphen

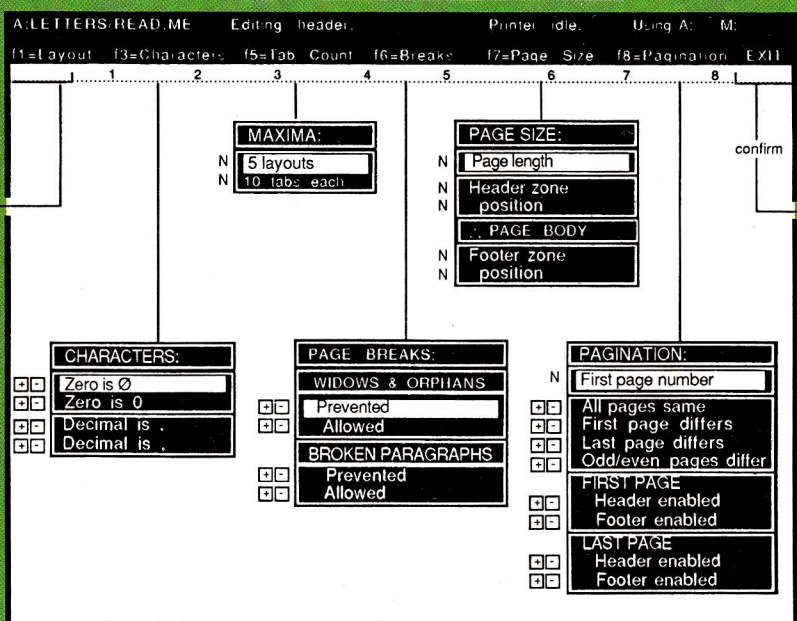
### EDITING LAYOUT SCREEN



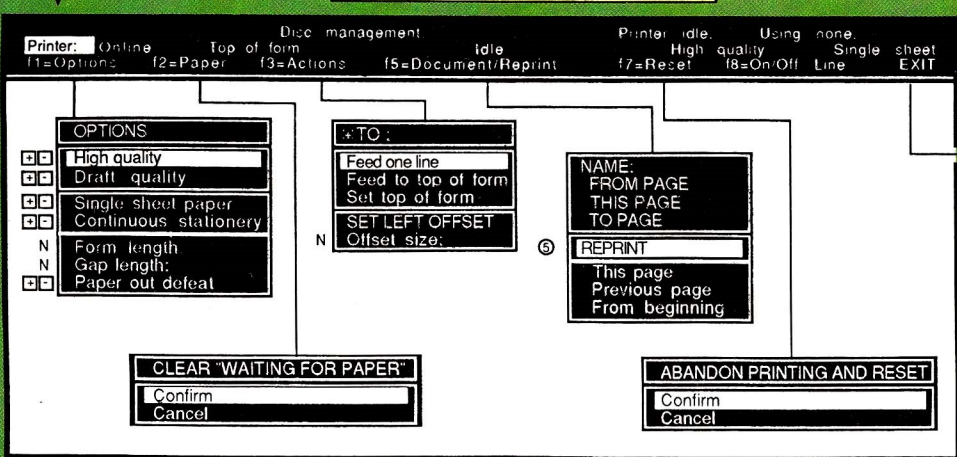
### EDITING PAGINATION SCREEN



### EDITING HEADER SCREEN



### PRINTER CONTROL SCREEN



### FOOTNOTES

1. The choices in this menu can be directly accessed from the Disc Management screen by their initials E, P, C, D as appropriate.
  2. This choice, or all choices in this menu, can also be accessed with the SET () and CLEAR () menus – see the LocoScript manual pp 121-123.
  3. This choice can be directly typed with the key combination [ALT]+[RETURN].
  4. The UNIT choice can only be accessed by the set menu.
  5. The REPRINT choice can be highlighted but not selected – you must use one of the choices below it on the menu.
- LocoScript is a trademark of Locomotive Software Ltd.